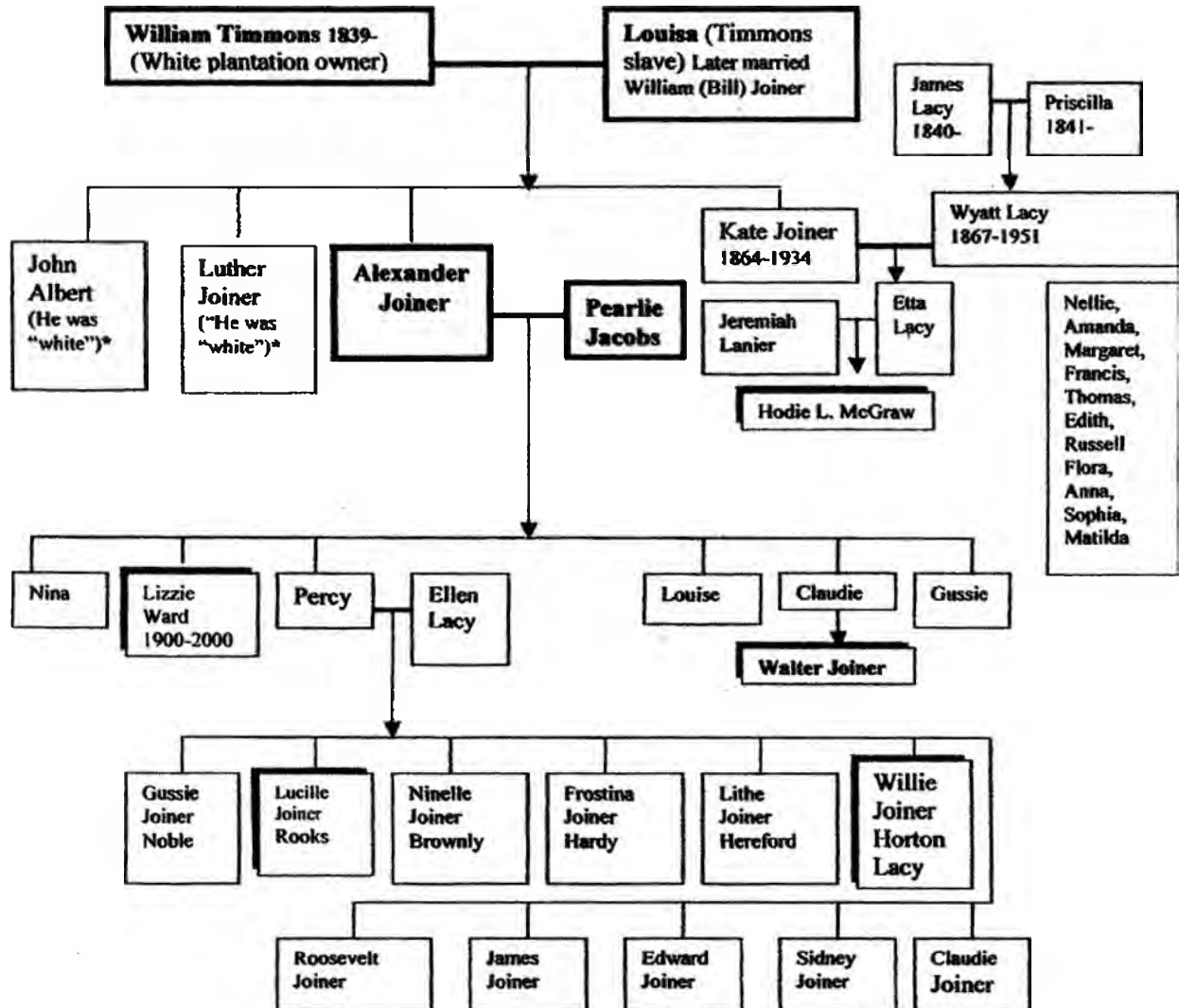


Lucille Rooks said sweet potatoes were stored in the kiln, “where they ground when we made molasses.” The waste used from “grinding” the cane to make molasses was used to cover the sweet potatoes. Some people had a corner cutoff in they garden where they had a hole dug. They covered it with shucks.

The following family chart was drawn from information gained from Mrs. Ward, Lucille Rooks, Willie Joiner Lacy, and others who were interviewed.



This chart was compiled based on information received from a number of people, including Lizzie Ward, Lucille Rooks, Willie Joiner, Walter Joiner, and Hodie Lacy McGraw. The blocks highlighted are the names of those who were interviewed.

\*Lucille Rooks said of Luther and John Joiner, “They were white.” Luther and John joined the army and left the area. Luisa had one more son, Elijah; he was dark [no other information obtained].

### Descendants of William Timmons and Luisa: The Joiners