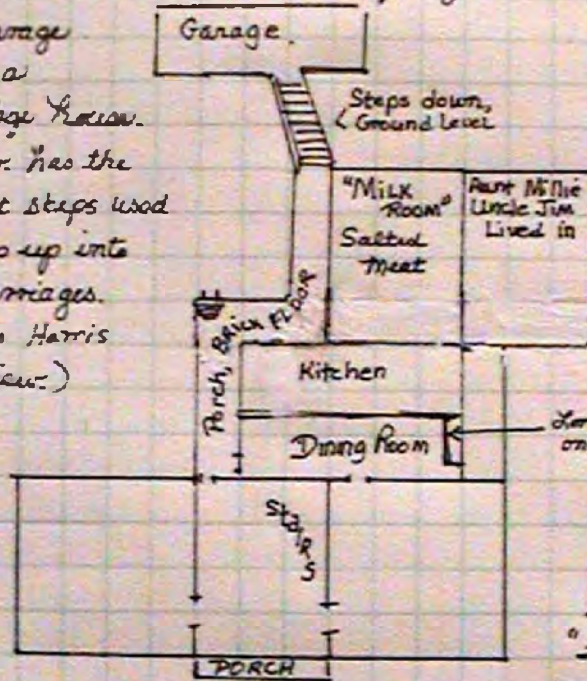


J.B. Harris House, "The LEE House"

The basement was dug all the way, from the rear stairs to the front of the house. The porch had a brick floor, high off the ground. The porch roof continued along the side of the "milk room" and also covered the steps to the garage.

The garage was a carriage house. Dad Jr. has the cement steps used to step up into the carriages. (photo in Harris interview.)



Two rooms, Earliest section of the house, built by Cooper

Long cabinet for the doctor who only used it to store medicines



"When J.B. bought the water tank, it took 20 men to lift it on the wooden stand."

Windows were in basement in the front. J.B. used the lighter area to store sweet potatoes, etc.

Two reliable people described iron rungs on the wall in the basement under the rear of the house. One J.B. Harris grandchild called it "The Dungeon." Corrine Harris never saw this.

Corrine Shovelton, daughter of Sam Harris, Sr. helped with this sketch.

Jan 28, 2005

Beverly A. Curry

Sketch of the J.B. Harris House/ Lee House as it is remembered by Corrine Harris Shovelton and Sam Harris Jr.