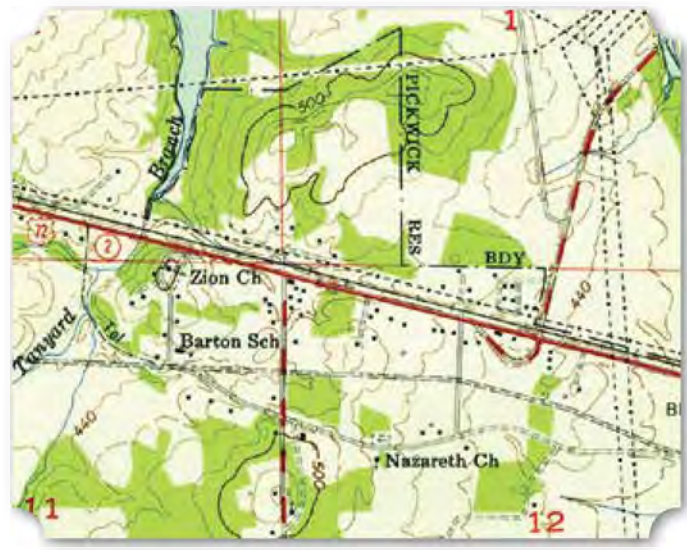




(Above) Aerial Photograph of Barton in 1949 (University of Alabama, Historical Map Collection, Online) (Below) 1954 USGS/TVA Topographic Map of Barton, Pride, Alabama Quadrangle (Below Right) 1971 USGS/TVA Topographic Map of Barton, Pride, Alabama Quadrangle

until he passed away; John H. Garner (1872-1943) owned a farm in the area from at least 1910 to 1920; and Reason Garner, Sr. (1875-1852) owned a farm in

1940. Other African American farming landowners laid to rest here include Henry L. Harden (1867-1963) who owned a farm from at least 1910 to 1940; Ashton Webster (1847-1920) who owned a farm from at least 1900 to 1910; Emmitt C. Oates (1880-1930) who owned a farm from at least 1920 to 1930 when he passed away; Alex Pride (1846-1951) and his wife, Hattie Pride (1887-1942) who owned a farm from



2 ■ Barton Hall

Barton Hall was also known as the Cunningham Plantation when it was photographed for the Historic American Buildings Survey (AL-337) in 1935. The

Cunninghams are related by marriage to Dr. Hugh Barton (1775-1856). Originally from Virginia, Dr. Barton and his family made their way to Tuscumbia, Alabama by 1825. His son, Armistead Barton (1800-1847), settled in the area with his father and married Amanda Cook (1809-1884) in 1829. Armistead Barton purchased about 40,000 acres of land and began to construct Barton Hall in 1840. The Greek Revival manor was not finished when Barton died in 1847 but took two more years to complete under the supervision of his widow.

(Below) National Register for Historic Places, Barton Hall, 1973 (NRHP Inventory Database-Online)

