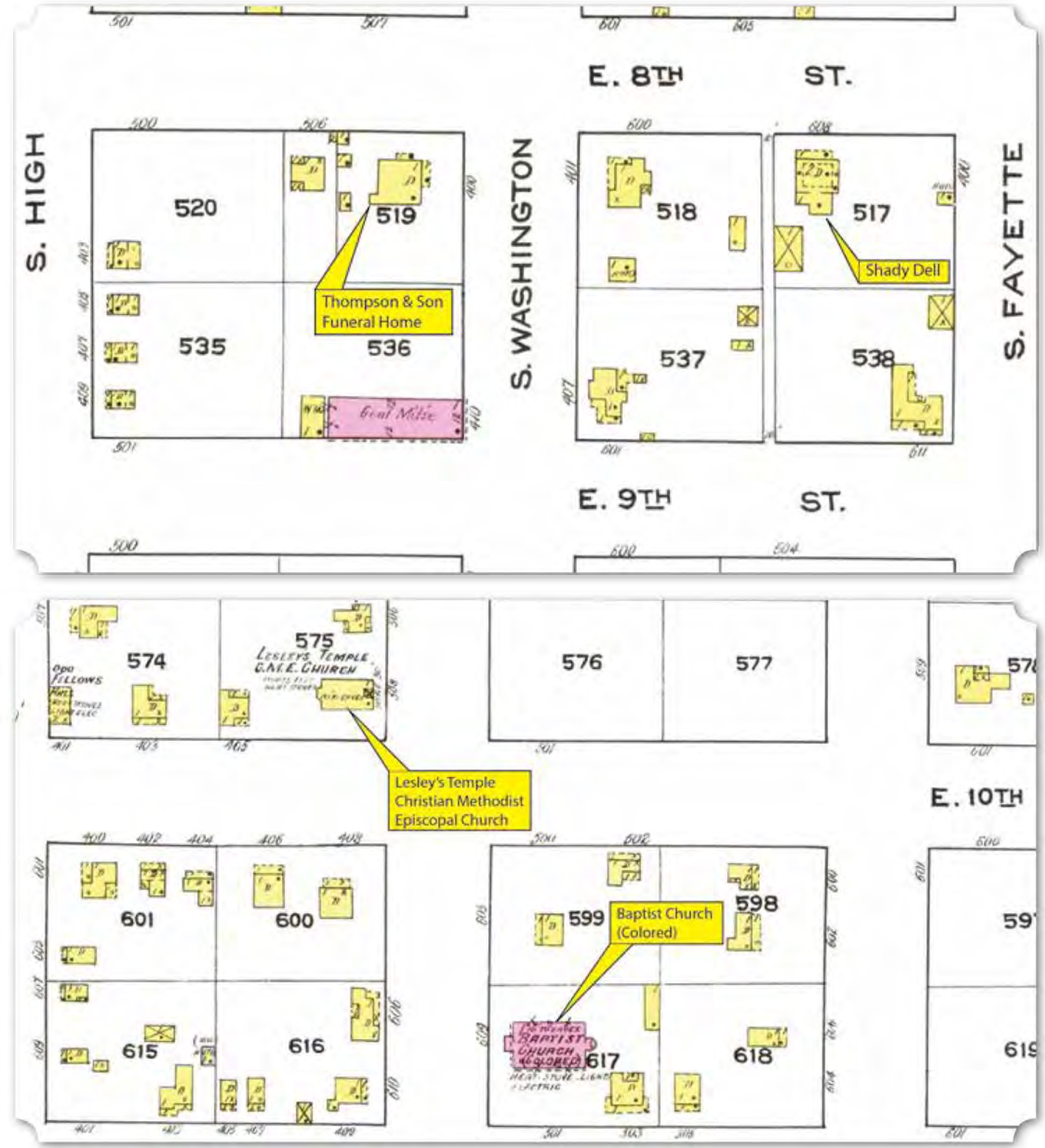


per family and the Haskins and Belue families owned three each. By 1920 there were a total of 47 African American-owned farms on the outskirts of Tuscumbia. Many of the same families owned farms at that time including the Belue and Byrd families who owned four farms and the Raglands who still owned two farms. Other families include the Browns with four farms and the Nolan, Freeman, Walker, and Rice families who owned two farms each. There were seven African

American farmers who owned a farm from 1900 to 1920 in the Tuscumbia area – William Brown, Rufus Byrd, Frank Hubbard, Robert King, Foster Nolan, Timothy Ricks, and Andrew Smith.

**(Below)** Excerpt of Sanborn Fire Insurance Map of Tuscumbia, Colbert County, Alabama. Sanborn Map Company, 1921. Showing the Southeast Quarter of Tuscumbia (University of Alabama, Historical Map Collection, Online)



**(Top)** Detail 1 of Sanborn Fire Insurance Map Showing Lesley Temple CME Church as “Lesley’s Temple C.M.E. Church” and the First Missionary Baptist Church (University of Alabama, Historical Map Collection, Online) **(Above)** Detail 2 of Sanborn Fire Insurance Map Showing Thompson & Son Funeral Home and Shady Dell (University of Alabama, Historical Map Collection, Online)

**KEY**

- COMMUNITIES
- CEMETERIES
- CHURCHES
- PLANTATIONS
- SCHOOLS
- OTHER

\* Indicates a Historical - Non-Extant Resource