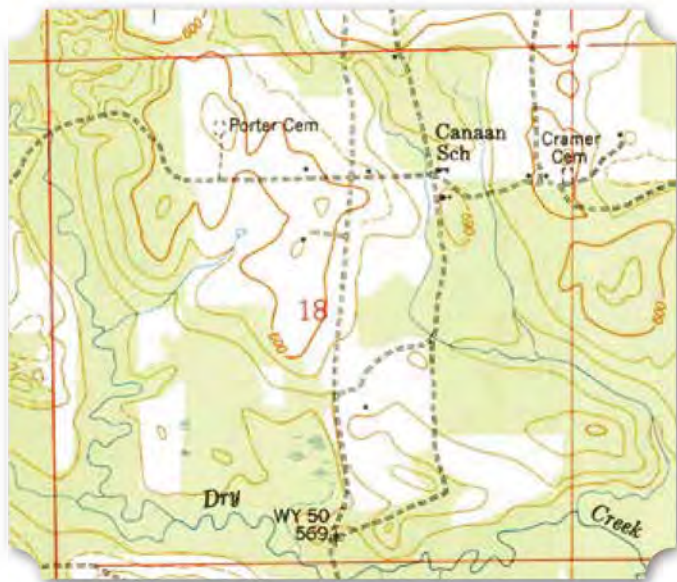
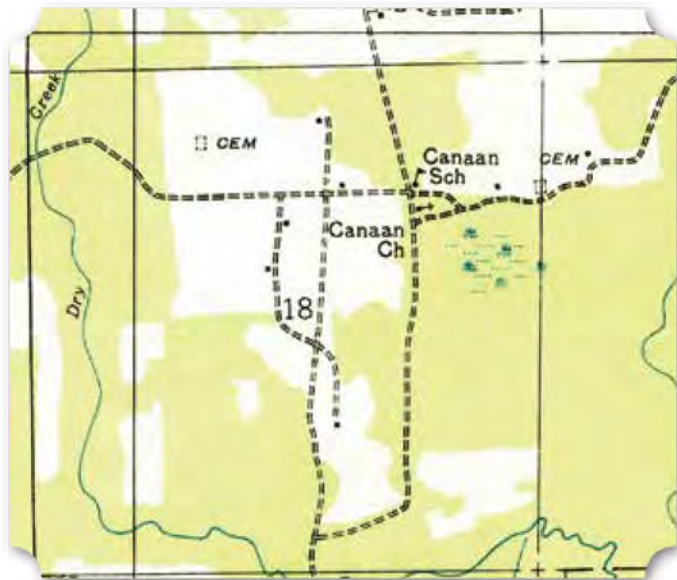


### 3

#### Canaan School\*

Canaan School was located north of Hillsboro off County Road 423. It was one of about 20 rural schools for African American children in Lawrence County in the early 20th century. It is included in the school census records in 1930 and on the 1936 USGS topographic map. It is also labeled on the 1951 topographic map, but the last census record to include Canaan School is 1954. By 1958, many of the schools are no longer included, presumably they



NAMES OF PARENTS			P. O. ADDRESS—ROUTE OR HOUSE AND STREET NO.	Birth-place CODE *	Living YES NO	Reads and Writes YES NO	Speaks English YES NO	Citizen YES NO	Occupation CODE †						
LAST	FIRST	MIDDLE													
Father <i>Swoope Clarence</i>			<i>Hillsboro</i>	1	✓	✓	✓	✓	1						
Mother <i>Willie Mae</i>															
NAMES OF CHILDREN (LIST IN ORDER OF BIRTH, OLDEST FIRST) CODE 0			NAME OF SCHOOL WILL ATTEND NEXT YEAR	Distance to School	BIRTH					Gr. CODE 00	Reads and Writes YES NO	Sex B G	Defects CODE †	Age CODE 0	
YEAR	MO.	DA.			CODE †	CODE *	Gr. CODE 00	YES	NO						B
<i>Robert</i>			<i>Canaan</i>	<i>1 mi.</i>	<i>'35</i>	<i>4</i>	<i>8</i>	<i>1</i>	<i>1</i>	<i>0</i>	<i>✓</i>	<i>✓</i>		<i>0</i>	<i>7</i>

*BIRTHPLACE 1. United States 2. Great Britain 3. Canada 4. Germany 5. France 6. Greece 7. Italy 8.	†AUTHORITY FOR BIRTHDATE 1. Birth Certificate 2. Bible Record 3. Baptismal Certificate 4. Parent's Statement 5.	‡DEFECTS 1. Blind 2. Crippled 3. Deaf 4. 5.	◊SEE INSTRUCTIONS ◆HIGHEST GRADE COMPLETED	‡OCCUPATIONS 1. Agriculture 2. Clerical Work 3. Domestic Service 4. Manufacturing 5. Mining 6. Professional Service 7. Public Service 8. Trade 9. Transportation 10.
--	--	--	---	--

School or District *Canaan* COLORED FAMILY CENSUS CARD Book No. \_\_\_\_\_ Year *1946*

(Left) 1936 USGS/TVA Topographic Map of Canaan School, Hillsboro, Alabama Quadrangle (Bottom Left) 1951 USGS/TVA Topographic Map of Canaan School, Hillsboro, Alabama Quadrangle (Above) School Census Card for the Swoope Family with a Child at Canaan School, 1946 (Lawrence County Archives, Moulton, Alabama)

were consolidated into fewer schools. In the early 20th century, Canaan School was located next to and associated with a church. However, by 1971, both the church and school were no longer there.

### 4

#### Cave Spring School\*

Cave Spring School was located in west central Lawrence County, north of Landersville. It was one of 20 rural schools for African American children in Lawrence County in the first decades of the 20th century. It is included in the school census records for



(Left) 1936 USGS/TVA Topographic Map of Cave Spring School, Landersville, Alabama Quadrangle (Above) 1960 USGS/TVA Topographic Map of Cave Spring, Landersville, Alabama Quadrangle

the county in 1930, but it was last included in 1950. It appears that Cave Spring School was one of the several rural schools that closed in the 1950s as part of school consolidation. Nearby Landersville School

