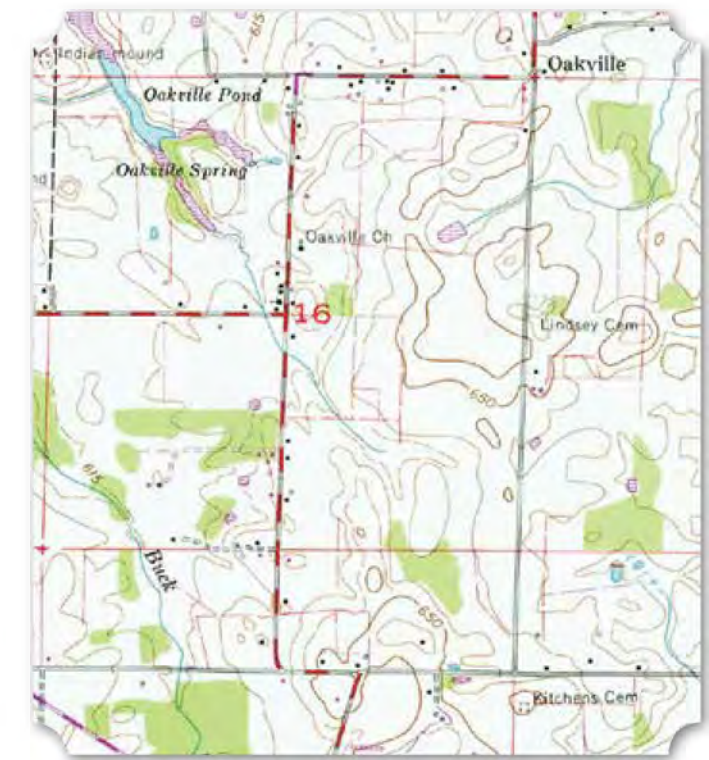
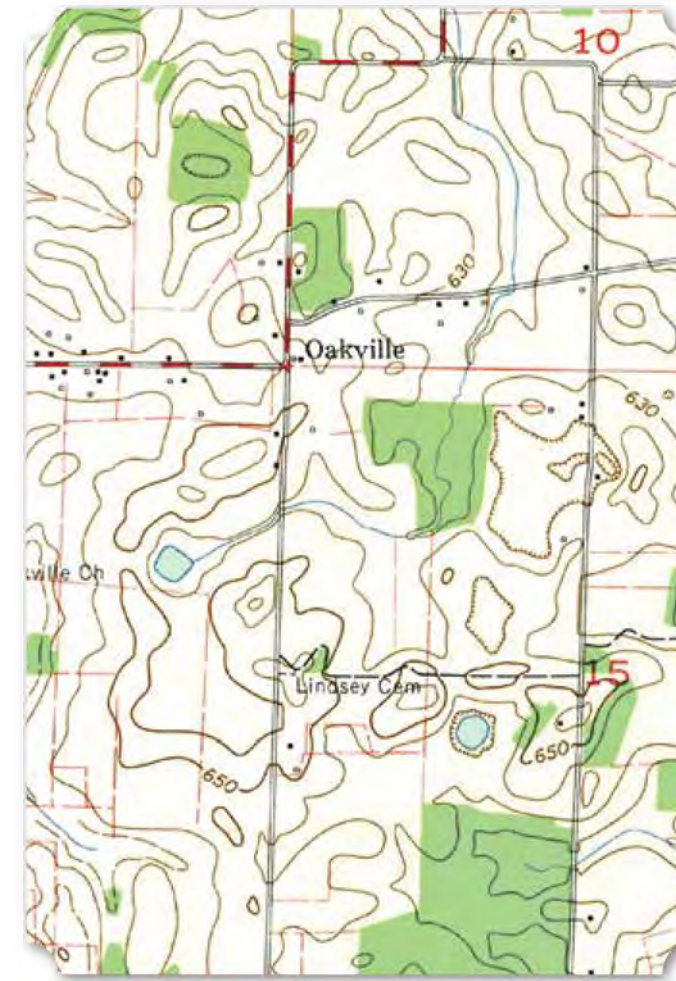
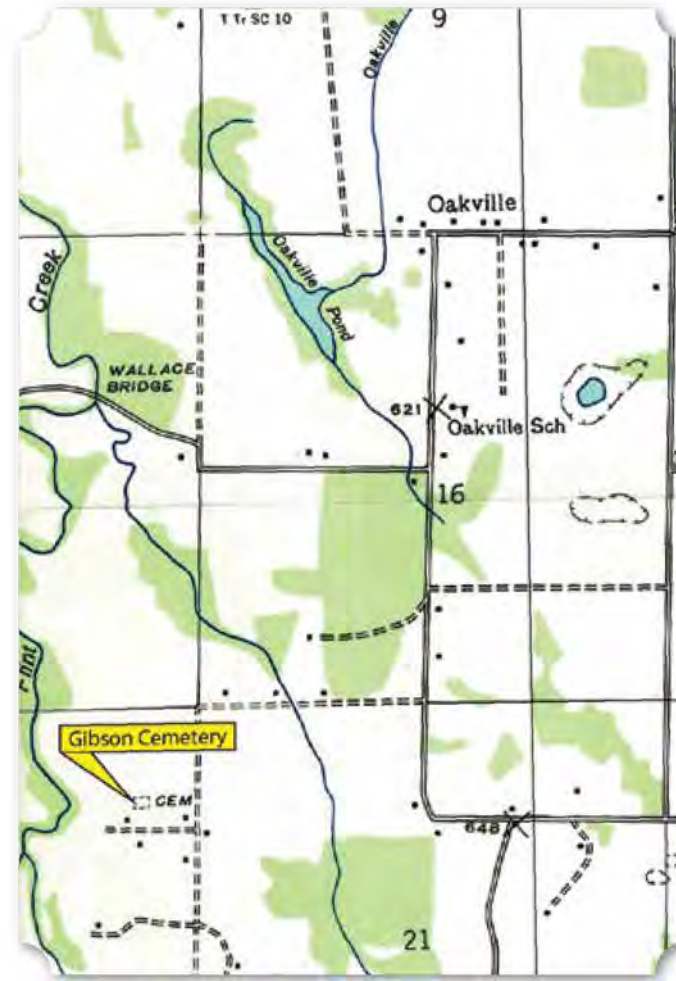


21 ■ Oakville

While Oakville may be known for one of the country's famous African American athletes, the area around Jesse Owens Birthplace and Museum had very few African American households and landowners in the early 20th century. Between 1900 and 1940, there were never more than 48 African American households in Oakville. In 1900, there were only 29 households of color, or 16% of the population. As the overall population grew slightly, the percentage of African Americans leveled off. In 1910, the 30 African American households made up only 13% of the community. By 1920, there were 41 households of color, only 11% of the population. There were 33 African American families in 1930 and 48 in 1940. Of the landowners, there were never more than four in any given year. Winnie Alexander and Abner

(Right) 1935 USGS Topographic Map of Oakville, Oakville, Alabama Quadrangle (Right Middle) 1960 USGS Topographic Map of Oakville, Oakville, Alabama Quadrangle (Far Right) 1976 USGS Topographic Map of Oakville, Oakville, Alabama Quadrangle



(Below) Excerpt of 1920 Census Record Showing Daniel Preuitt Owning a Farm (National Archives and Records Administration via Ancestry.com) (Bottom) Excerpt of 1920 Census Record Showing Eliza Moore and Anna Gibson Owning Farms (National Archives and Records Administration via Ancestry.com)

105/107	Preuitt Daniel	Head	W	21	41	W	Alabama	Alabama	Alabama	Alabama	General farm 02/107
	Preuitt James	Wife	F	13	27	W	Alabama	Alabama	Alabama	no none	
	Preuitt John	Daughter	F	13	13	W	Alabama	Alabama	Alabama	no none	
	Preuitt James	Son	M	13	13	W	Alabama	Alabama	Alabama	no none	
	Preuitt Mary	Son	M	13	10	W	Alabama	Alabama	Alabama	no none	
	Preuitt Lucy	Daughter	F	13	9	W	Alabama	Alabama	Alabama	no none	
	Preuitt Leah	Son	M	13	5	W	Alabama	Alabama	Alabama	no none	
	Preuitt Vera	Daughter	F	13	6	W	Alabama	Alabama	Alabama	no none	
	Preuitt Robert	Son	M	13	4	W	Alabama	Alabama	Alabama	no none	
	Preuitt John	Son	M	13	3	W	Alabama	Alabama	Alabama	no none	

115/116	Moore Eliza	Head	W	21	57	W	Alabama	Alabama	Alabama	General farm 02/116
	Moore John	Wife	F	13	42	W	Alabama	Alabama	Alabama	no none
	Moore Jas	Son	M	13	12	W	Alabama	Alabama	Alabama	no none
	Moore Ben	Son	M	13	5	W	Alabama	Alabama	Alabama	no none
	Moore Emma	Daughter	F	13	5	W	Alabama	Alabama	Alabama	no none
	Moore Rubin	Son	M	13	7	W	Alabama	Alabama	Alabama	no none
116/116	Gibson Eliza	Head	W	21	35	W	Alabama	Alabama	Alabama	General farm 02/116
	Gibson Oscar	Brother	M	13	17	W	Alabama	Alabama	Alabama	no none
	Gibson Malie	Sister	F	13	14	W	Alabama	Alabama	Alabama	no none

KEY

- COMMUNITIES
- CEMETERIES
- CHURCHES
- PLANTATIONS
- SCHOOLS

* Indicates a Historical - Non-Extant Resource