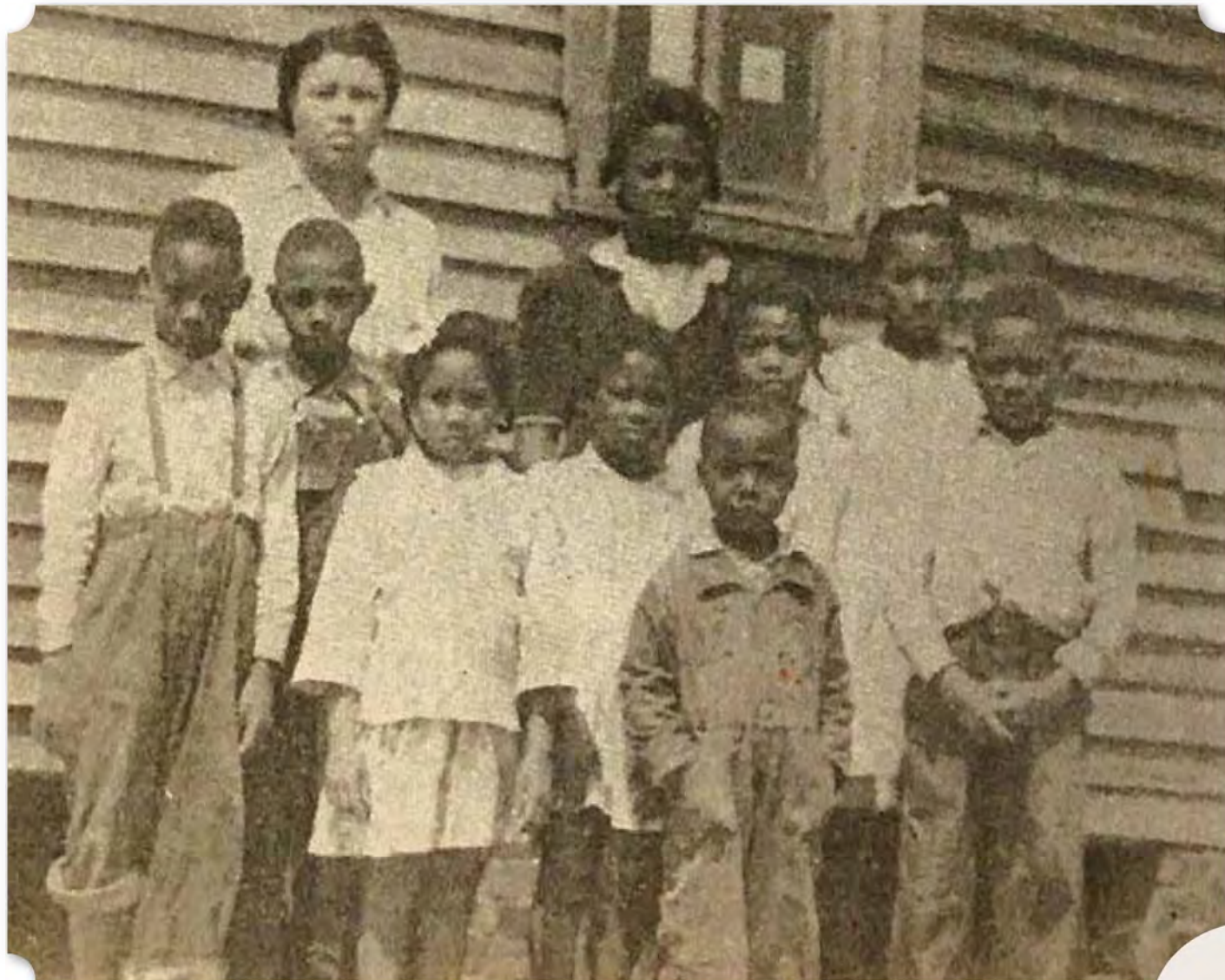




(Left) 1935 USGS Topographic Map Showing Moses Chapel
(Below) Historic Photograph of Students and Teachers of the Moses Temple School



included Mrs. Shinault, Mrs. Pearl Johnson, and Mrs. Irene Collier. Mrs. Ruth Redus was the teacher in 1945, but the school closed that year due to low enrollment. It reopened the next year because the nearest alternative, the St. John School, was too far for many of the children to walk. When Moses Temple School reopened, Mrs. Nanie E. Horton was the teacher.

28 Mt. Pleasant School*

Mt. Pleasant School was located along Old Highway 20 east of Greenbrier and near the Madison County line. Although it is unclear when the school began, Mr. James Shipley was reportedly a teacher there in 1881. By the late 1940s, the land with the schoolhouse was bought and the building was torn down. The school was never rebuilt. Rev. A.M. Donaldson, who owned a two-room house on his farm, allowed the community to use his home as a school for a time. Ms. Ida L. McDonald taught at Rev. Donaldson's house.

(Below) 1935 USGS Topographic Map Showing Moses Chapel



KEY

- COMMUNITIES
- CEMETERIES
- CHURCHES
- PLANTATIONS
- SCHOOLS

29

Mt. Zion Cumberland Presbyterian Church and School*

The Mt. Zion Church is located on Pryor Road southeast of Mooresville. The church dates to the early 20th century and appears on the 1936 topographic map. The church is associated with Mt. Zion School and Thatch Cemetery. The Mt. Zion School was established in the early 1920s, although its original location is not known. In 1935 it was moved to another unknown location, where classes were held in a run-down building. At this time, the school had two teachers and attendance was poor. By 1947, the school was moved again to the brick church on Pryor Road – Mt. Zion Church. The school was well supplied with "ample light, good blackboards, a good heating system," and had a moderately equipped playground. Ms. Irene Sandifer was the teacher.

The Pryor-Thatch Cemetery, or simply Thatch Cemetery, lies across the road from the church. The sign at the cemetery indicates that it was established

(Below) 1936 USGS Topographic Map Showing Mt. Zion Church

