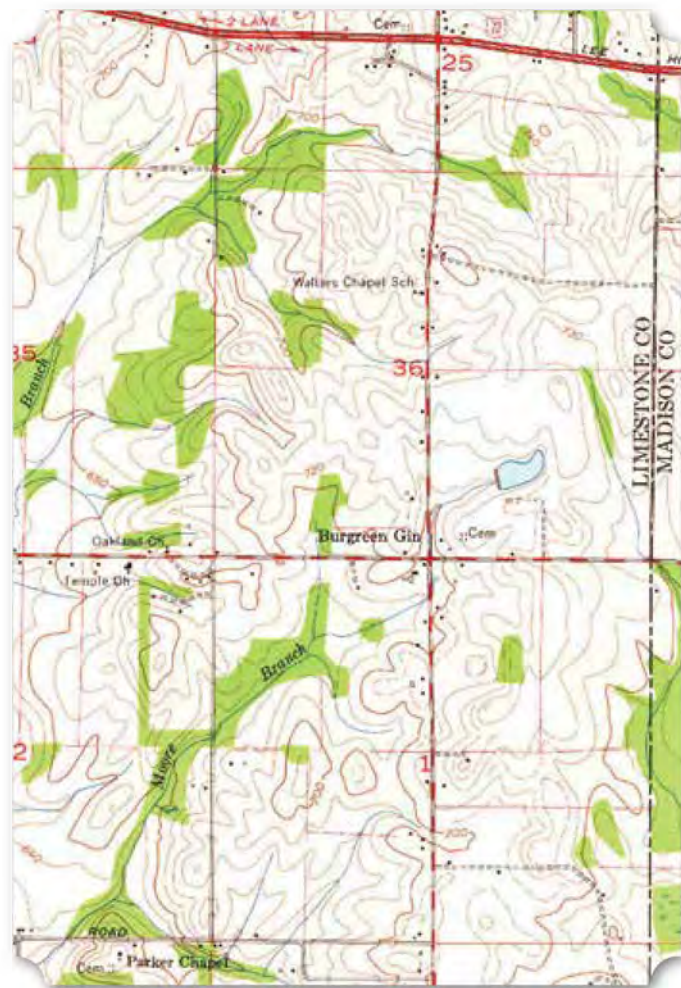


The 1936 USGS/TVA topographic map showed “Waldo” Chapel on the east side of Burgreen Road. On the 1963 USGS topographic map, Walters Chapel School was mapped on the west side of the road.

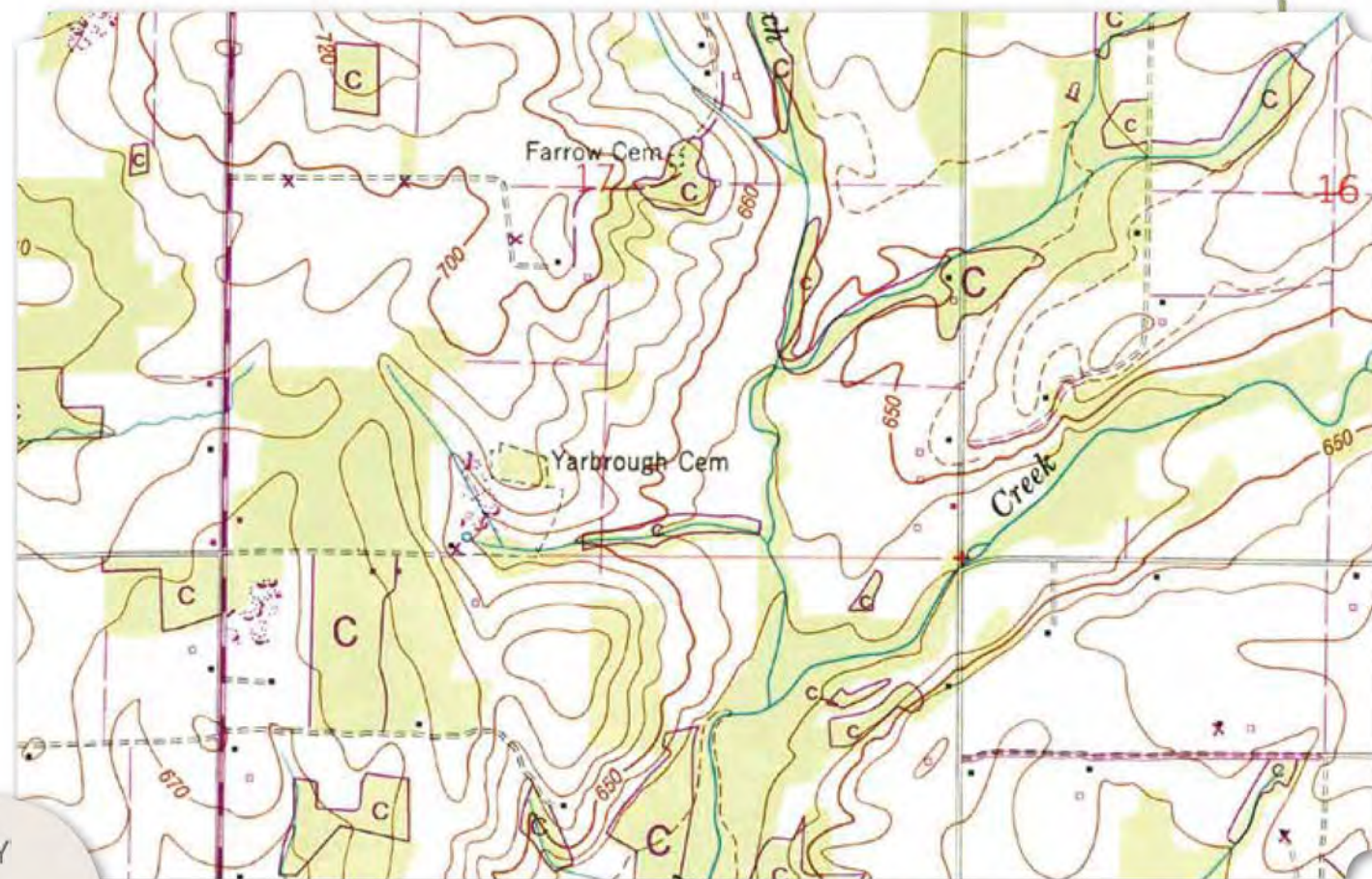


(Above) 1963 USGS Topographic Map Showing Walter’s Chapel School

that of Floyd O. Moseley (1903-1913), occurred. However, by 1948, the chapel was no longer present and the topographic map that year showed only the Yarbrough Cemetery. This African American cemetery contains approximately 24 graves and was last used in 1974 for the burials of Melvinia Beddingfield (1868-1974) and Edward Moseley (1914-1974). Cannon and Malone are common surnames found here. Among the individuals buried here are James S. Moseley (1859-1942), his wife Mattie Yarbrough Moseley (1863-1933), and some of their children including, Floyd O. Moseley, Edward Moseley (1914-1974), Vanzo Moseley Phelps (1890-1932), and None Moseley Fletcher (1906-1972). James and his wife owned a farm in the area from at least 1900 to 1930.



(Below) 1936 USGS Topographic Map Showing Yarbrough Chapel (Right) Image of Class in Front of Dogwood Flat School, Date Unknown (Retro Glances) (Bottom Right) 1948 USGS Topographic Map Showing Yarbrough Cemetery



KEY

- COMMUNITIES
- CEMETERIES
- CHURCHES
- PLANTATIONS
- SCHOOLS

50 ■ ■

Yarbrough Chapel* and Cemetery

The Yarbrough Chapel was located southwest of Athens at the east end of Snake Road where it crosses Seven Mile Post Road. Yarbrough Chapel appeared on a 1936 USGS/TVA topographic map without the cemetery, although the cemetery was established by at least 1913, when the first known interment,