

28

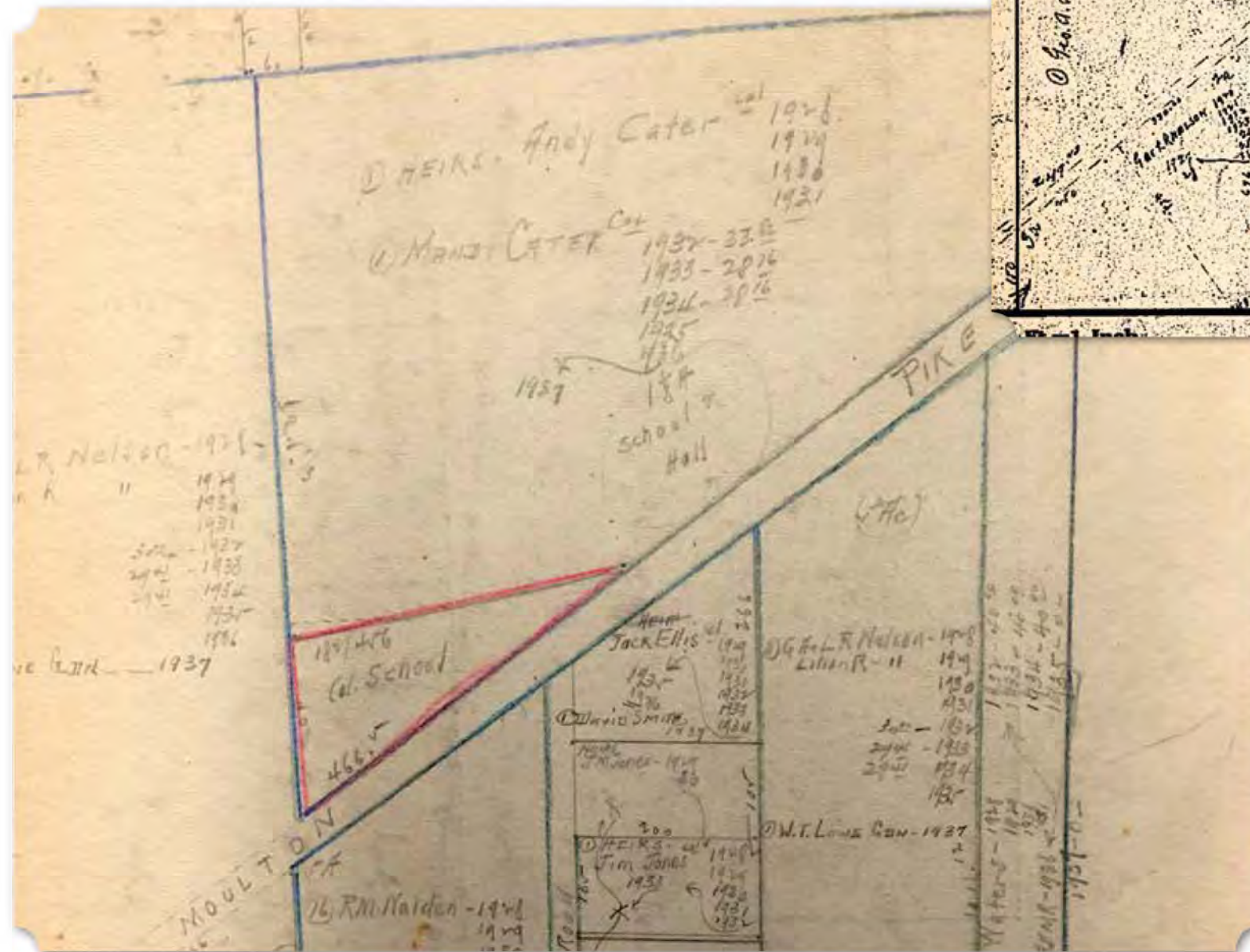
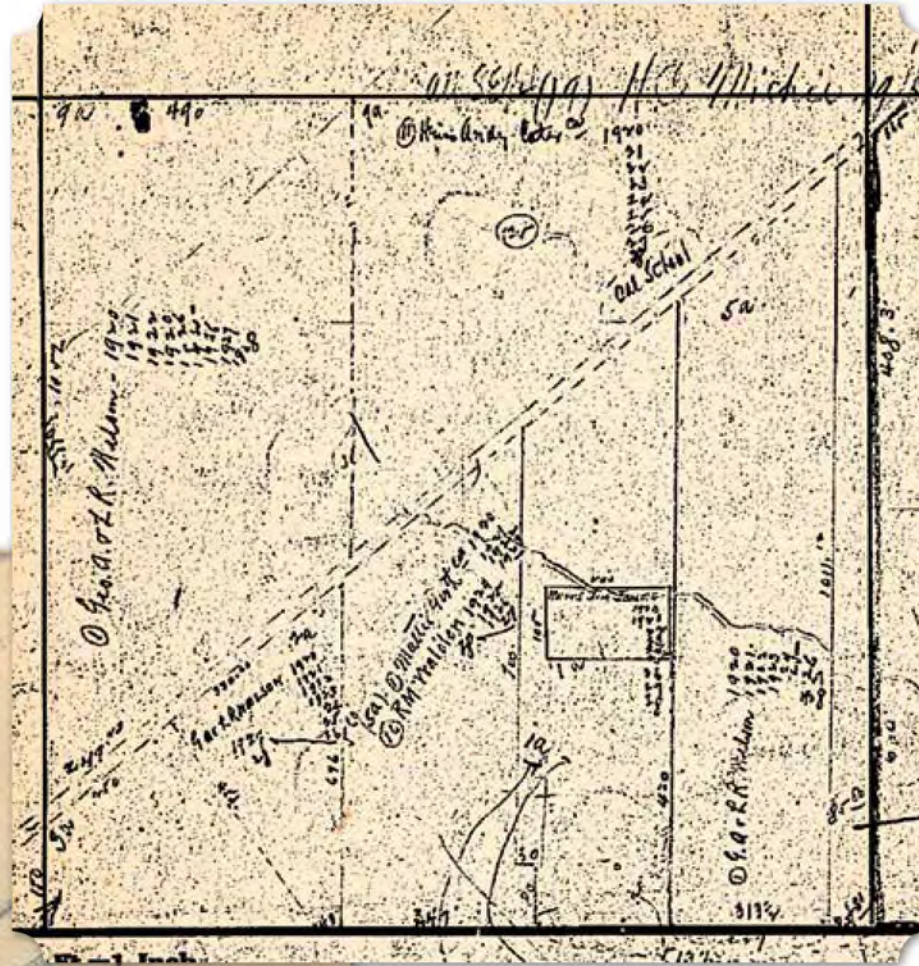
Moulton Heights School

In 1920, the land on which the school is located was owned by the heirs of Andy Cater. The larger parcel set aside about an acre and a half for the school on the north side of Moulton Heights Road and Littrell Avenue. The remaining parcel belonged to the Cater family until at least 1937.

This school is now the Tennessee Valley Outreach Rescue Mission.

(Right) Moulton Heights School and Surrounding Parcels, 1928 (Morgan County Archives, Decatur, Alabama)

(Below) Moulton Heights School and Surrounding Parcels, 1920 (Morgan County Archives, Decatur, Alabama)



29

Mt. Mariah United Methodist Church

This church is located in the community of Talucah. The land on which the church was built was owned by local African American farmer Winfrey Chapman in 1928. Chapman also owned the land surrounding the Leader's School. Both can be seen on the 1936 USGS/TVA topographic map.

30

Nebo*

Nebo was an early African American community to the northwest of Decatur, north of Joe Wheeler Highway, about halfway between Decatur and Trinity. Nebo as a community was never separately enumerated in the federal census. Most likely, it falls between the districts of Decatur and Trinity. However, land records from 1920-1940 indicate that there was a sizable community of African American landowning farmers. Landowner and farmer, Tom Davis, owned the land containing the original Nebo Cemetery from at least 1928-1937. The Nebo School and the original church were on the land owned by the Henry and Mahala Brown and heirs, Green Fennell, and John and Lela Booker for much if not all of the early 20th century.

Despite the well-rooted African American community centered around an old slave cemetery, the community of Nebo was destined for more in the late 1950s. Industry along the river had picked up in the mid-century and the industrial giant from Minnesota, 3M, desired a large plant and compound precisely where Nebo was located. All farmers and landowners were made to move. The church had been more to the west side of Finley Island Road and later the cemetery was moved to behind the church. The school was demolished.

